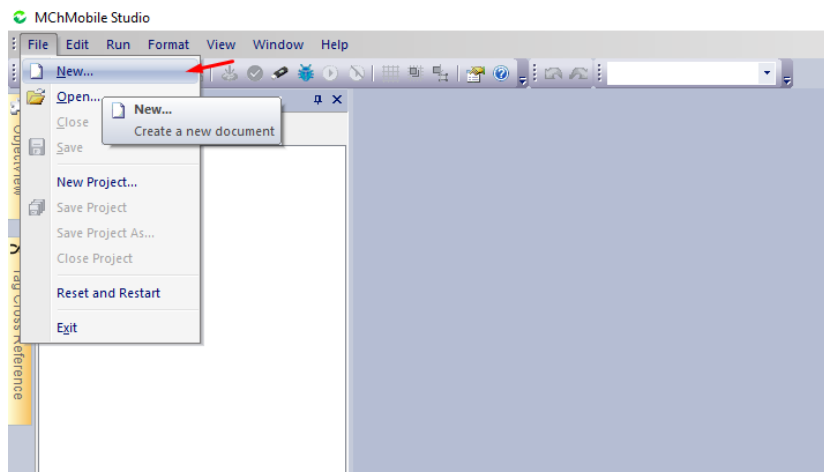


Creating a New Project with MchMobile Studio Software

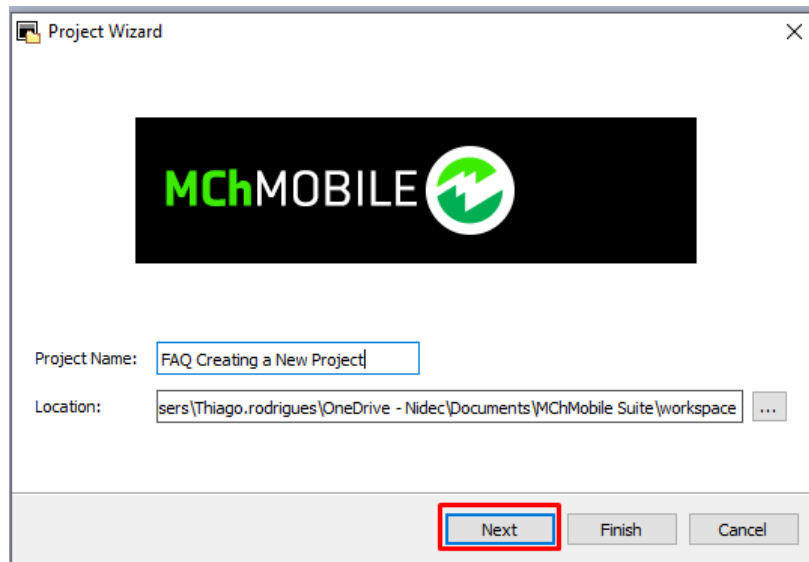
In this section we will demonstrate how to create a new project for the MCh HMI using the MChMobile software. In this example we use software version 5.22. This software can be downloaded from the Control Techniques website <https://acim.nidec.com/en-US/drives/control-techniques>



To start creating a new project, click on the "File" tab and after "New" to start a new project, you can also click on the "New Project" option.

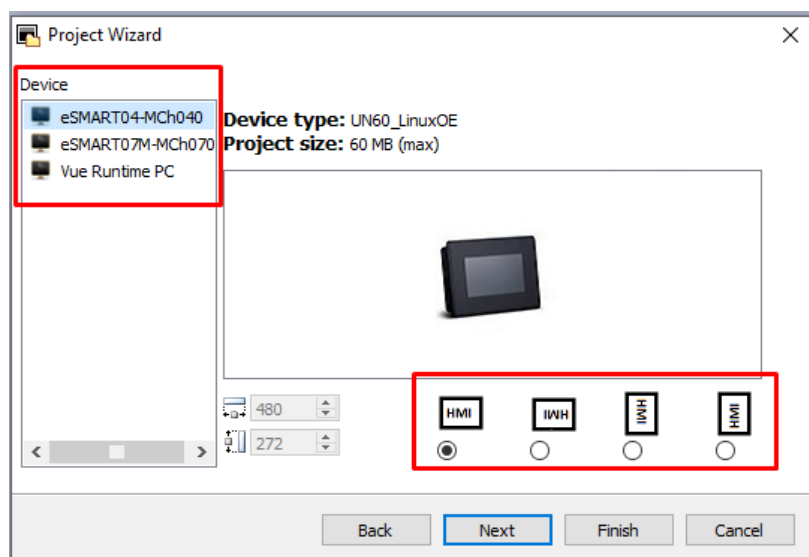


Type the name of the Project and select the location where the project will be saved.



Select the HMI code that will be used in the project, eSmart04-MCh040 is the 4-inch HMI, and the eSmart07-MCh070 is the 7-inch HMI. It is also possible to create a Vblue Runtime PC project, which can run on your computer by communicating directly with the drives/inverters control techniques.

At the bottom, select the HMI positioning according to how the HMI was fixed on the electrical panel. This setting can be changed separately in the project settings.



Select the desired Template, which can be Unified, Native and Web or Custom. When Unified is selected, only the native page is created, when Native and Web is selected, both pages are created, when Custom is selected, it is possible to make different configurations including Web, Tablet or Smartphone or all options.

