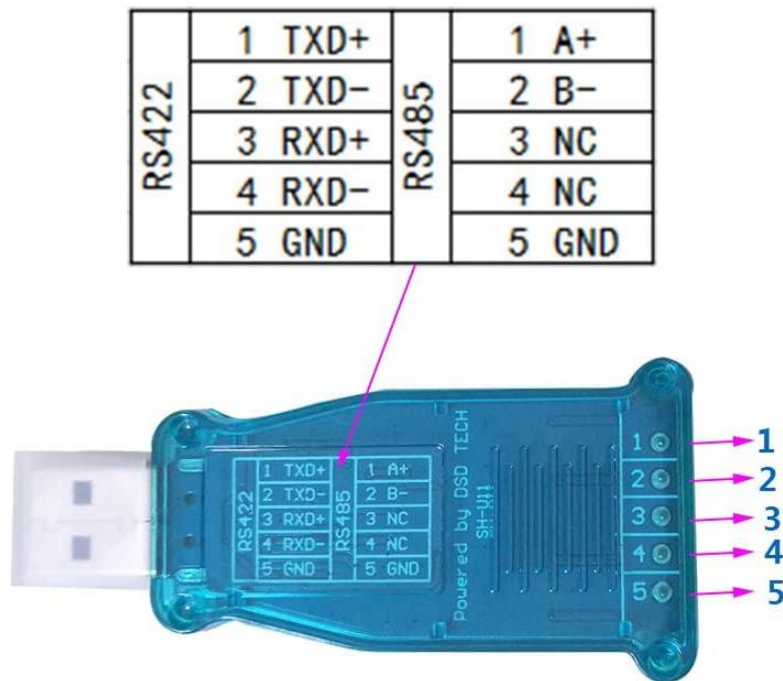


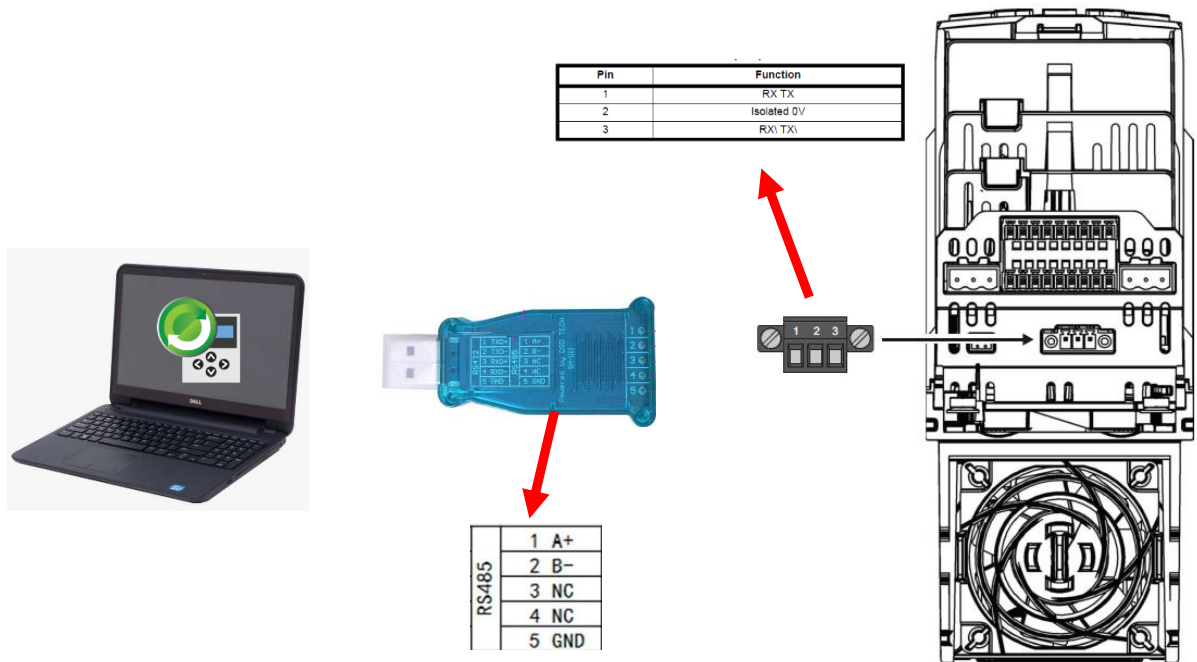
Connection with Pump Drive F600 serial communications port is a 3-way screw type connector

The F600 Pump Drive already has built-in RTU communication input, and in this document we will demonstrate how to connect the F600 drive with Software Connect.

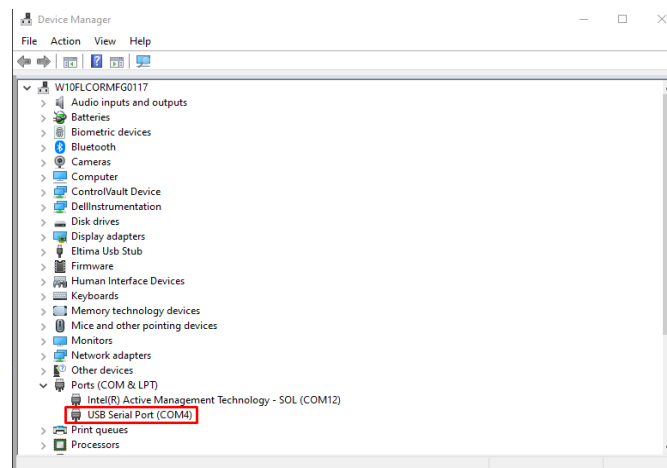
It is not possible to carry out this communication with the CT-USB interface, for this communication it is necessary to purchase a market converter from USB to RS485 as shown in the image below.



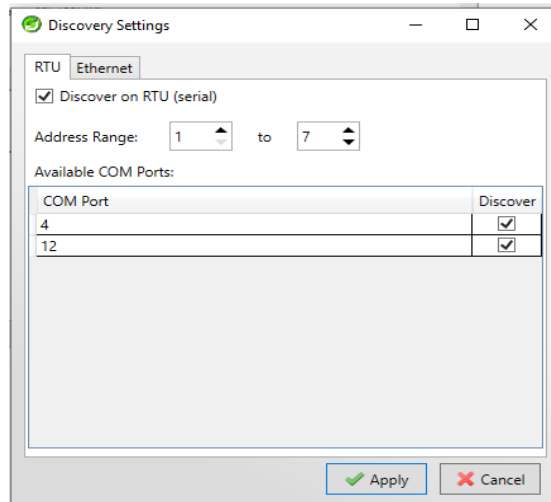
In the images below you can see how to make the connection between the computer and the F600 Pump drive.



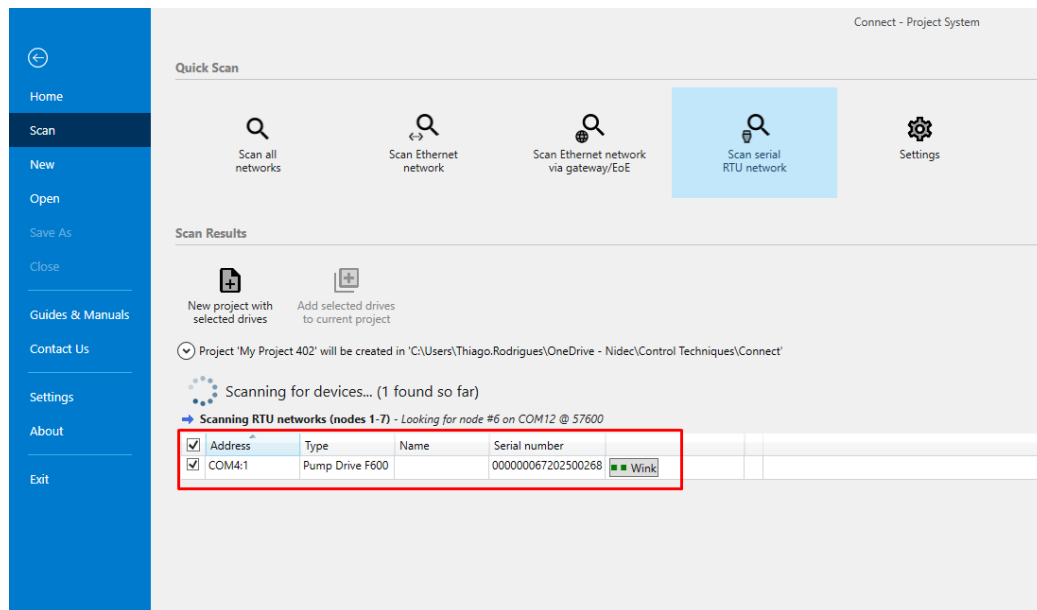
After connecting the interface to the computer, check which USB port the interface has been configured to communicate with Connect.



In the settings, enable the USB ports.



Scanning the drive



Online with the drive

The screenshot displays the Control Techniques software interface, titled "Connect - My Project 402". The interface is divided into several sections:

- Ribbon:** Contains tabs for File, Home, View, and Tools. The "Home" tab is active, showing various icons for project management (Add drive, Project Overview, Upload to project, Download from project), drive communication (Online, Upload from drive, Download to drive, Connection settings), and drive configuration (Set mode and region, Default, Set model, Reset, Save parameters in drive, Set real-time clock). Additional icons for Tools & Wizards, Parameter Listings, Block Diagrams, Compare with defaults, New parameter file, and Load parameter file are also present.
- Project Tree:** Located on the left, it shows the project structure under "My Project 402". The selected project is "(Unnamed) (COM4.1)", which contains sub-items: Dashboard, Setup, Diagnostics, Parameters, Block Diagrams, Custom Lists, Parameter Files, and Macro Files.
- Dashboard (COM4.1):** The main workspace area. It features a sidebar on the left with icons for Drive (Pump Drive F600), SI-IO Slot 1, SI-IO Slot 2, and SI-Ethernet Slot 3. The main area is titled "Dashboard (COM4.1)" and includes a subtitle: "Commands for working with a drive. Commands can also be found in the ribbon and by right-clicking nodes in the tree." Below this, there are three main sections:
 - Quick Start:** Includes icons for Guided Setup and User Manual.
 - Diagnostics:** Includes icons for Parameter Listings, Parameter Reference Guide, Block Diagrams, CTScope, Drive Trip Log, Reset, Destination Conflicts, and Deploy user program.
 - Drive & Setup:** Includes icons for Online, Connection settings, Change Firmware, Setup, Set real-time clock, Set mode and region, Set model, Keypad Programming, and SP Smartcard Migration.
 - Parameters:** Includes icons for Default, Upload from drive, Download to drive, Upload to a file, Download file to drive, New parameter file, Load parameter file, Compare with file, and Compare with defaults.