

Updating the firmware of Pump drive F600

To update the firmware of the Drive and Keypad, the F600 Pump Drive, SI-Ethernet communication board, Keypad-RTC and Software Connect were used.

The firmware's can be found on the Control Techniques website as shown in the image below

Downloads

Did you find what you wanted? If not submit a support request using our [technical support ticketing system](#).

INSTALLATION SHEETS					
Title	Issue	File Type	Size	Lang	
KI Keypad Installation Sheet	2	pdf	319 KB	EN	Download
KI-485 Keypad Installation Sheet	1	pdf	292 KB	EN	Download

PARAMETER REFERENCE GUIDES					
Title	Issue	File Type	Size	Lang	
Pump Drive F600 - Parameter Reference Guide	4.22.0.0	zip	7 MB	EN	Download

FIRMWARE					
Title	Issue	File Type	Size	Lang	
F600 Pump Drive firmware version - v01.00.03.00	v01.00.03	zip	512 KB	EN	Download
Pump Drive F600 Keypad - Firmware V02.00.03.02	V02.00.03	zip	125 KB	EN	Download

After downloading the desired firmware, open the Connect Software using Ethernet communication.

Quick Scan

Scan all networks | Scan Ethernet network | Scan Ethernet network via gateway/EoE | Scan serial RTU network | Settings

Scan Results

New project with selected drives | Add selected drives to current project

Project 'My Project 403' will be created in 'C:\Users\Thiago.Rodrigues\OneDrive - Nidec\Control Techniques\Connect'

Finished scanning for devices. (1 found.)

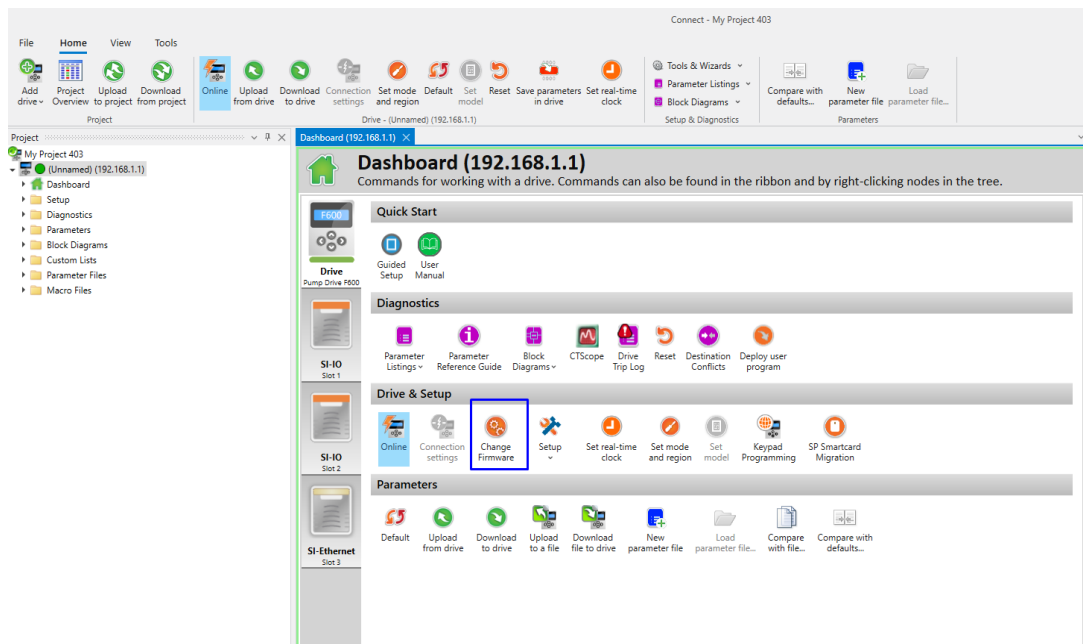
Scanning Ethernet networks - One drive found

Scanning RTU networks (nodes 1-7)

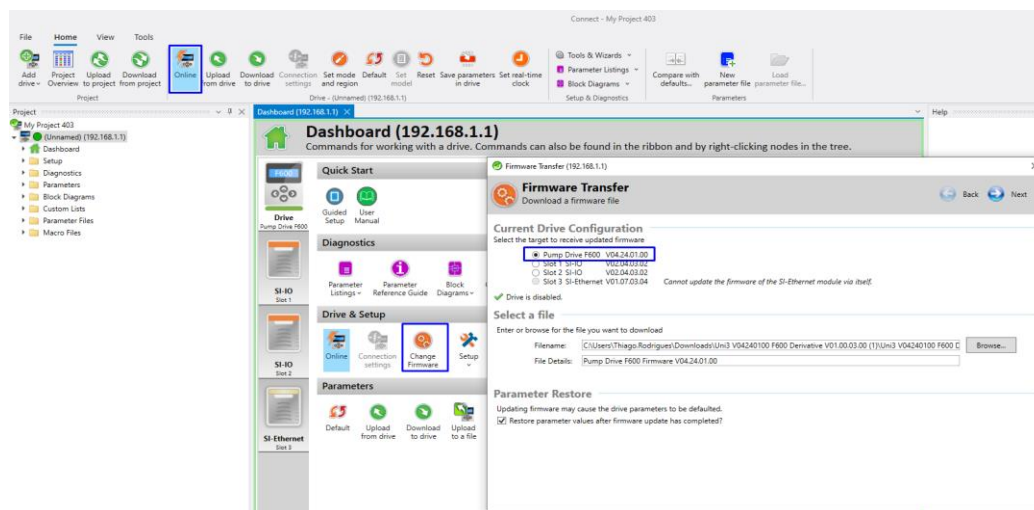
Address	Type	Name	Serial number	Wink
192.168.1.1	Pump Drive F600		000000067202500268	



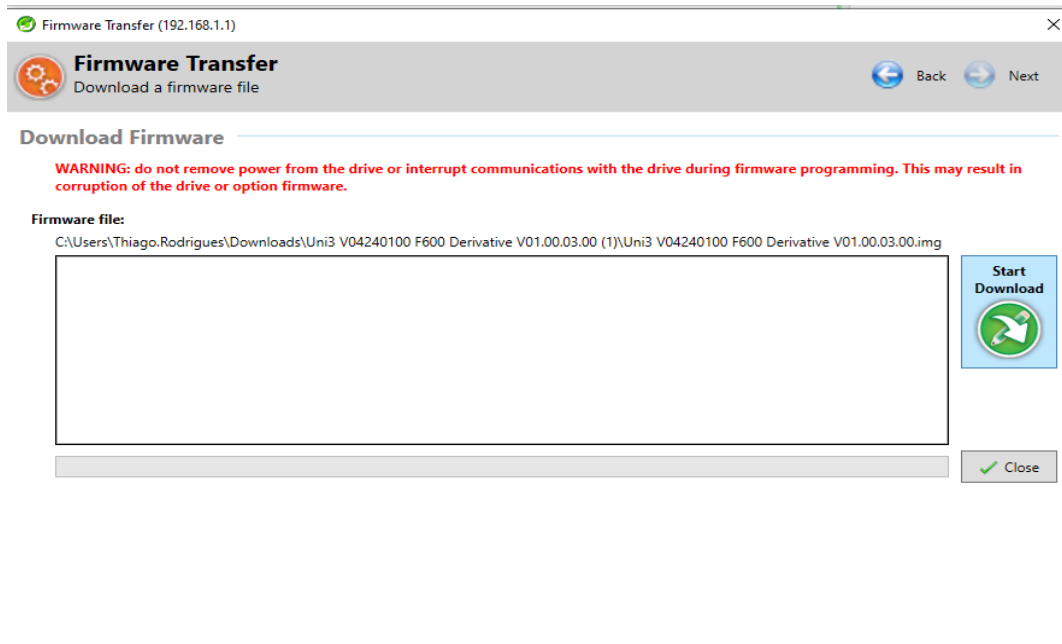
Online with the drive on the dashboard tab, select “Change Firmware”



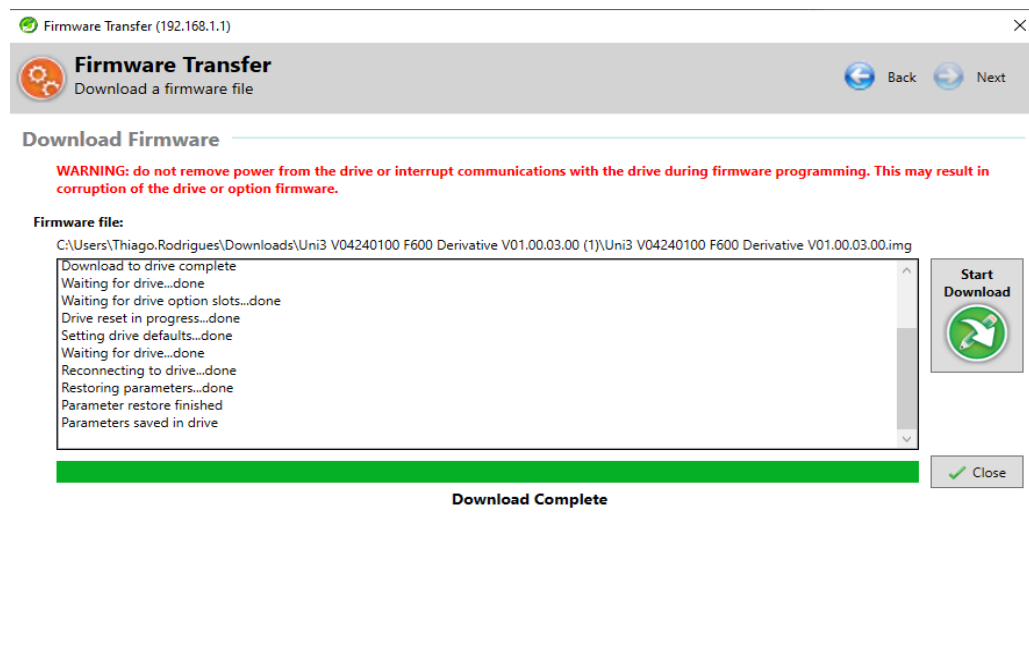
Select the firmware and click in “next”



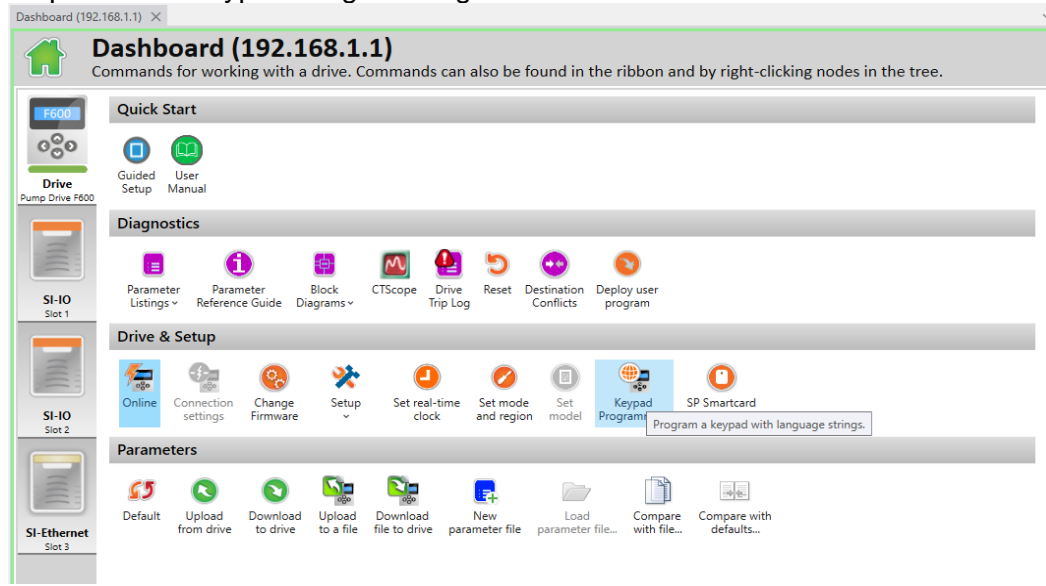
Click in "Start Download"



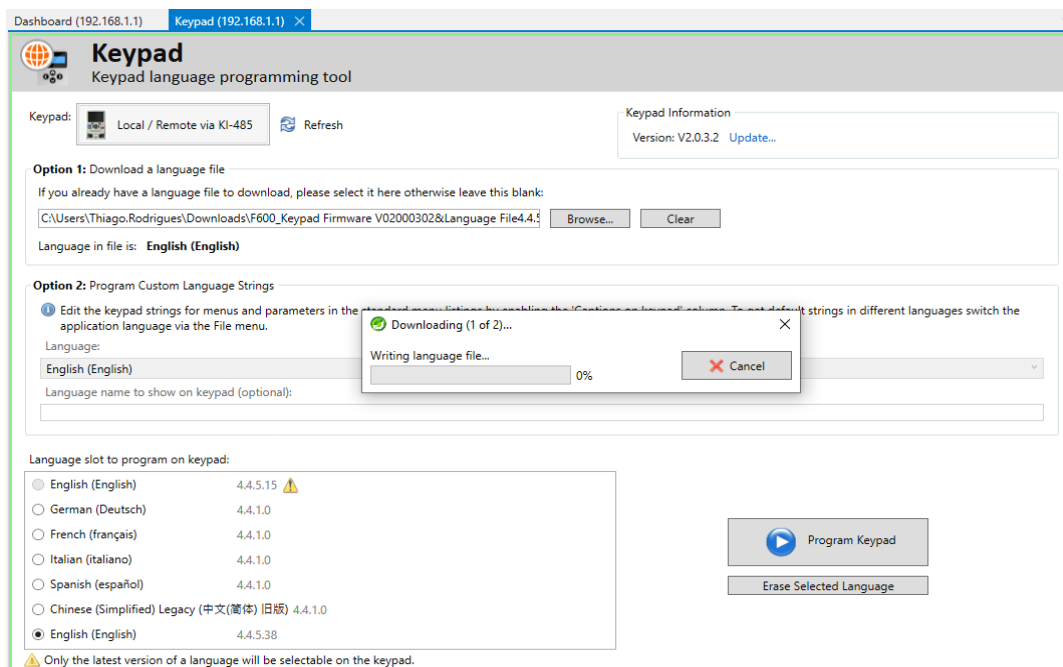
Download Complete



Next step select is Keypad Programming.




Select the file and download to the Keypad.



Keypad Firmware Downloaded



Dashboard (192.168.1.1)

Keypad (192.168.1.1)



Keypad

Keypad language programming tool

Keypad:  Local / Remote via KI-485  Refresh

Keypad Information


Version: V2.0.3.2 [Update...](#)

Option 1: Download a language file

If you already have a language file to download, please select it here otherwise leave this blank:

Language in file is: **English (English)**

Option 2: Program Custom Language Strings


 Edit the keypad strings for menus and parameters in the keypad menu. Edit by enabling the "Customize keypad" option. To set default strings in different languages switch the application language via the File menu.


Language:


English (English)

Language name to show on keypad (optional):


Language slot to program on keypad:


<input type="radio"/> English (English)	4.4.5.15	
<input type="radio"/> German (Deutsch)	4.4.1.0	
<input type="radio"/> French (français)	4.4.1.0	
<input type="radio"/> Italian (italiano)	4.4.1.0	
<input type="radio"/> Spanish (español)	4.4.1.0	
<input type="radio"/> Chinese (Simplified) Legacy (中文(简体) 旧版)	4.4.1.0	
<input checked="" type="radio"/> English (English)	4.4.5.38	


 Only the latest version of a language will be selectable on the keypad.

 Downloading (2 of 2)...

100%



 Programming completed.

 Program Keypad

Erase Selected Language