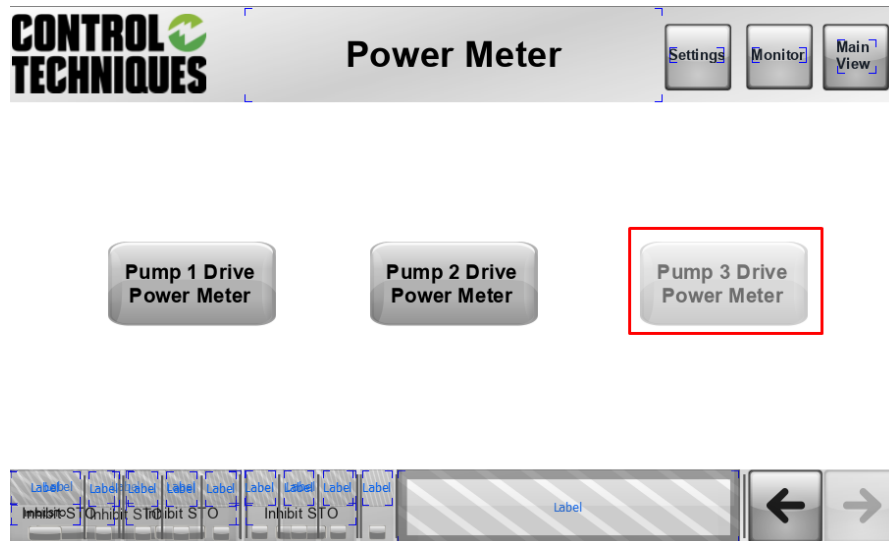


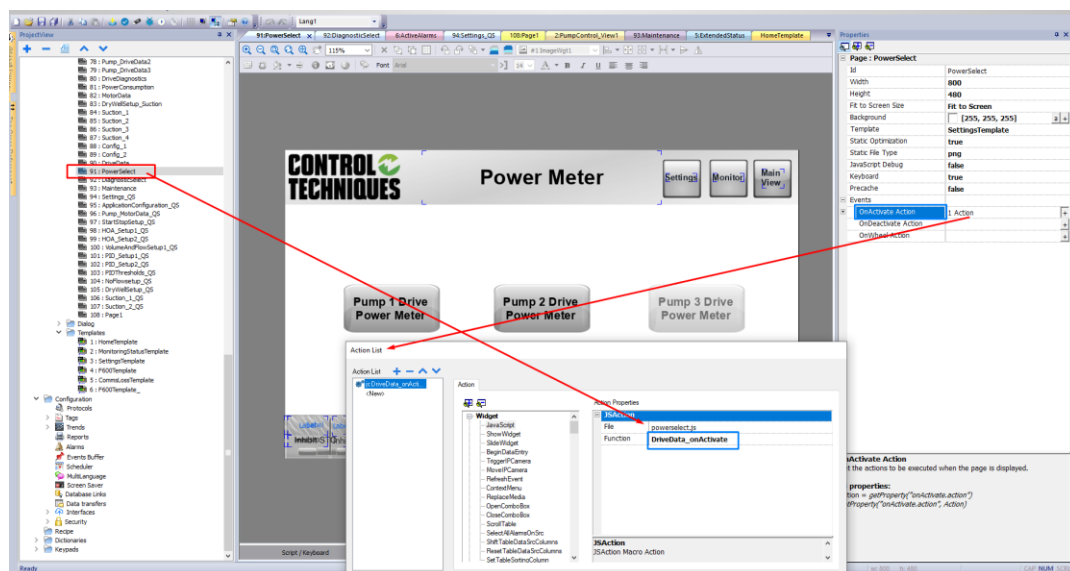
Using Javascript on HMI to show or hide a button

In this document we will demonstrate how to display or hide a button using Java Script on the HMI Mch.

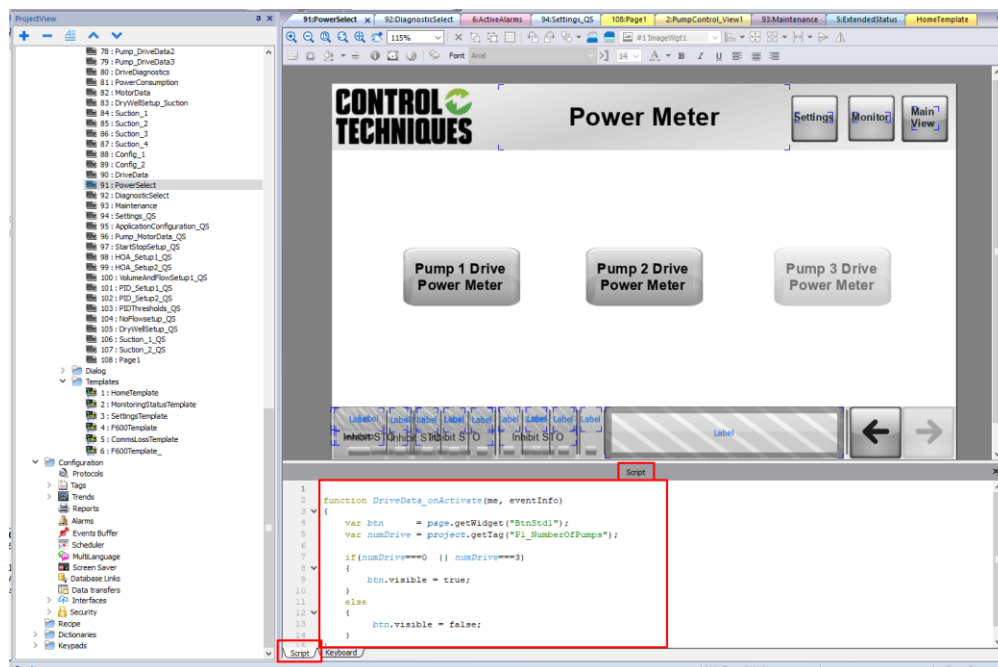
Below we will demonstrate how to view or hide the underlined button below



Internally in the Mch Mobile software, on the right side on the OnActivate Action tab you can add a Java Script for a function when this project screen is active



When selecting Script, at the bottom of the Software it is possible to edit the functions of the Selected Script.



In the created program, a Tag was used that we use in our project and some variables were created in JavaScript itself

In Red the name of the button used in the Script.

In Blue, the variables created and used in the Script

And in Orange the Tag used in the project shown in the next two images

The screenshot displays the 'Power Meter' screen with three buttons: 'Pump 1 Drive Power Meter', 'Pump 2 Drive Power Meter', and 'Pump 3 Drive Power Meter'. Below the screen is a JavaScript script. A red box highlights the button name 'BtnStd1' in the script, a blue box highlights the variable 'btn', and an orange box highlights the tag 'P1_NumberOfPumps'.

```

1 function DriveData_onActivate(me, eventInfo)
2 {
3     var btn = page.getWidget("BtnStd1");
4     var numDrive = project.getTag("P1_NumberOfPumps");
5
6     if (numDrive === 0 || numDrive === 3)
7     {
8         btn.visible = true;
9     }
10    else
11    {
12        btn.visible = false;
13    }
14 }
15

```

The Properties panel on the right shows the configuration for the 'BtnStd1' button, including its value, label, and actions.

The screenshot displays the 'Tags' list in the ProjectView. The tag 'P1_NumberOfPumps' is highlighted in orange. The tag configuration table is shown below.

Data	Type	Tag name	PLC tag name	Groups	Tag URI	Encoding	Comment	Rate	R/W
Control Techniques Modbus TCP/prot2	Container								
Alias: P600_1									
P1_NumberOfPumps	short	P1_NumberOfPumps			0Param1670727713short			500	R/W