

This App/Upgrade note applies to the Screen Mch family of HMI

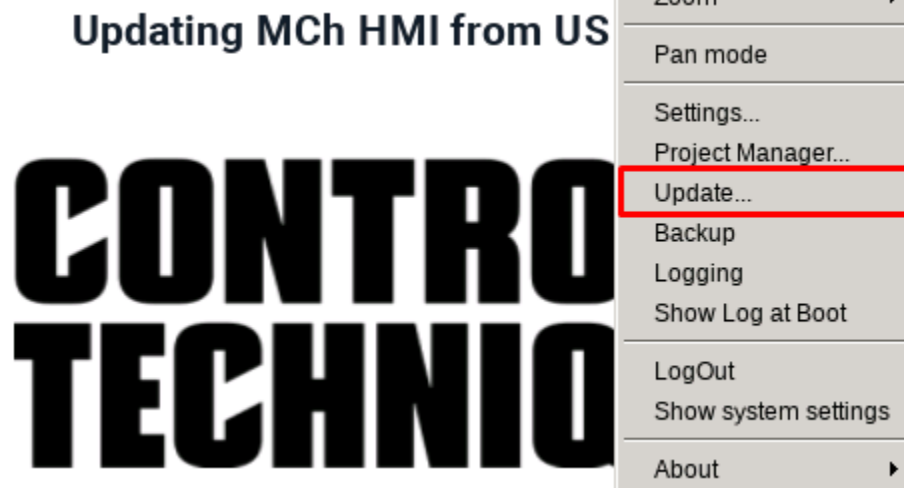
Updating MCh HMI from USB stick

This session describes how to load a project on HMI from a USB stick

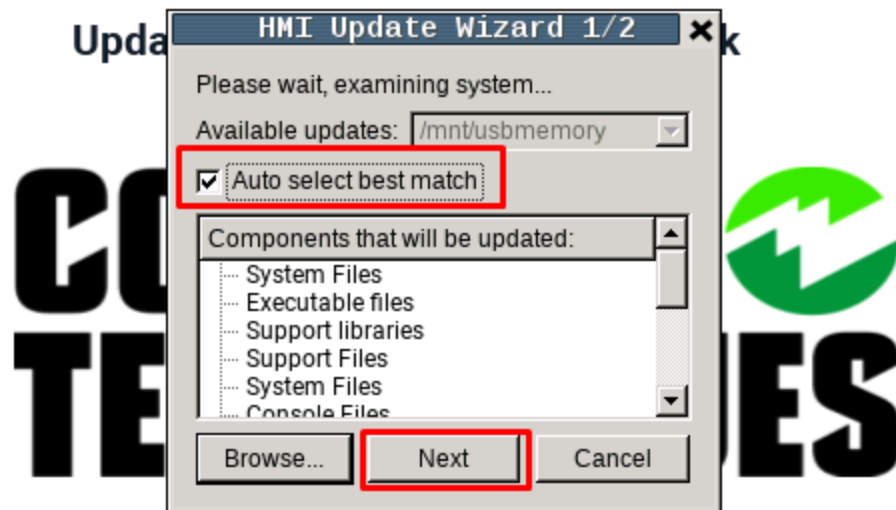
To perform this procedure, the project must already be on the pendrive with the correct extension to use on the HMI

Turn off the HMI, put the pendrive with the project loaded and turn on the HMI.

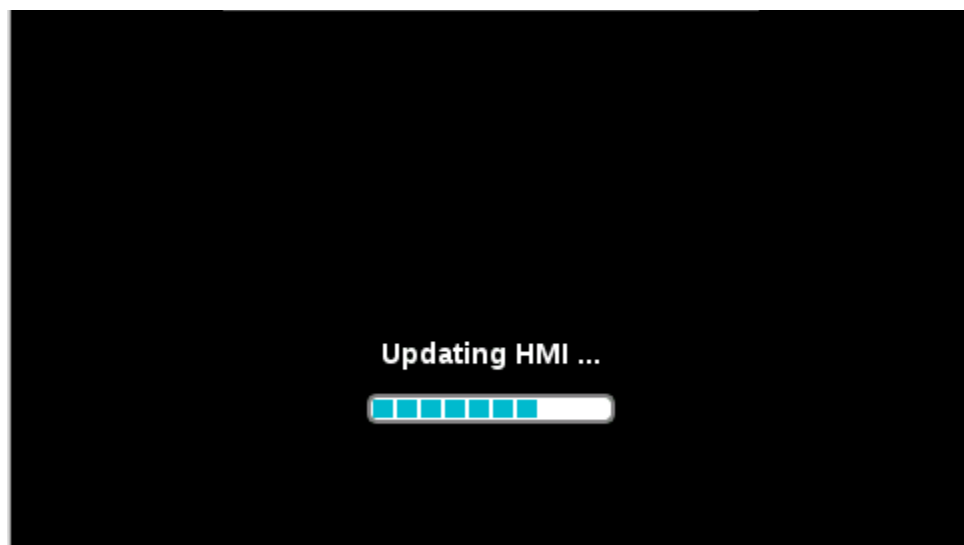
After HMI turns on, hold your finger on the screen at any point for 5 seconds until window below opens, click update...



Select "Auto select best match" and click "next"



After clicking next, the HMI will start updating the project





→ All for dreams

After a few minutes the HMI will restart with the new project loaded, this time may vary depending on the size of the project to be loaded.

