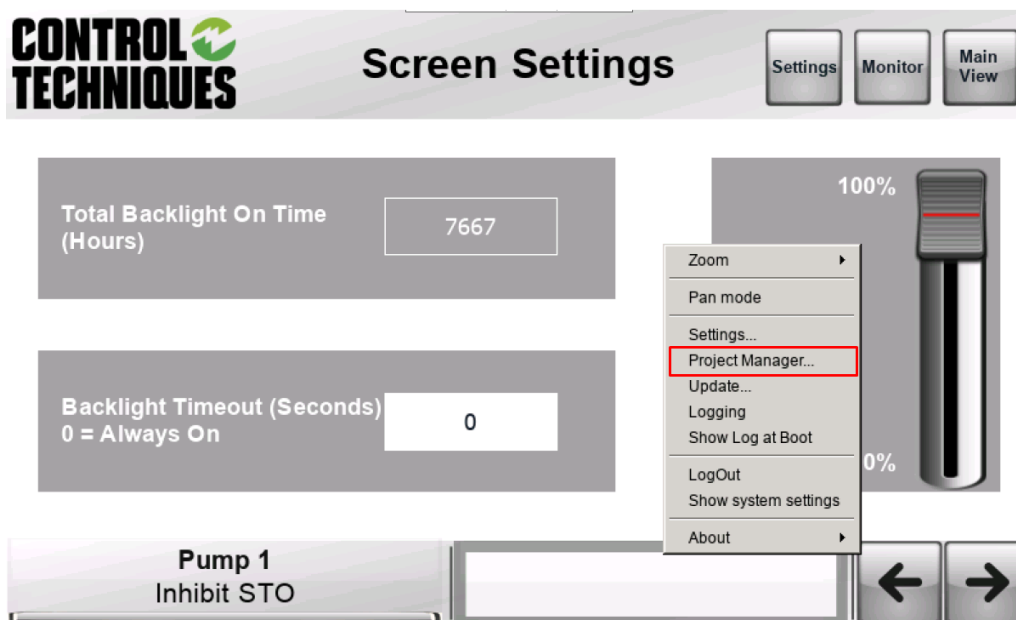


## **Managing multiple projects on an HMI – how to switch, delete, etc**

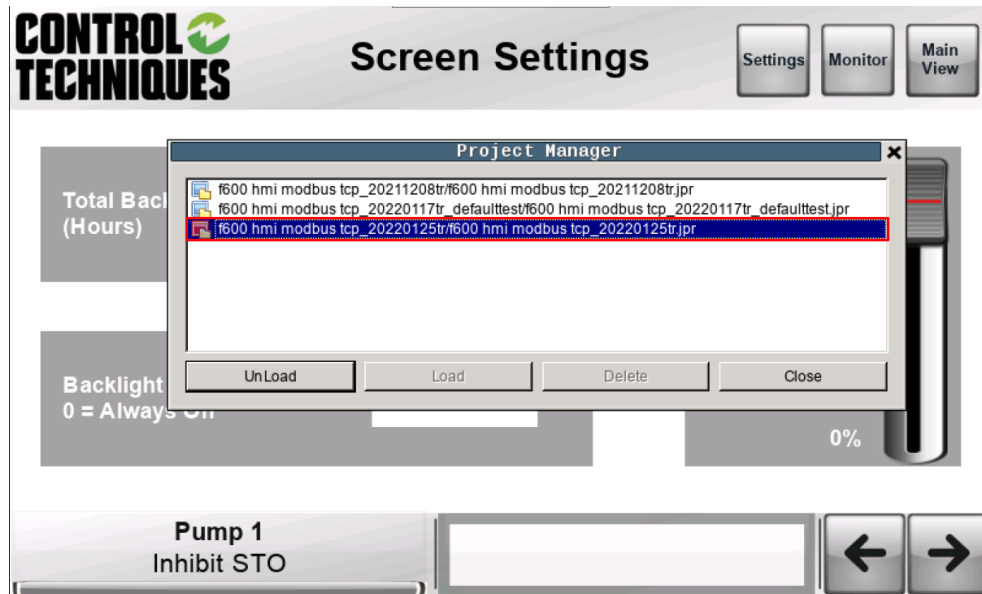
This section aims to describe how to delete or change existing software on the HMI. In this way it is possible to use different software on the HMI as long as there is enough space to store it.

Note: Every time a software is downloaded on the HMI, this software is stored on the HMI, this software can be deleted by MCh Mobile or by the HMI itself in the settings.

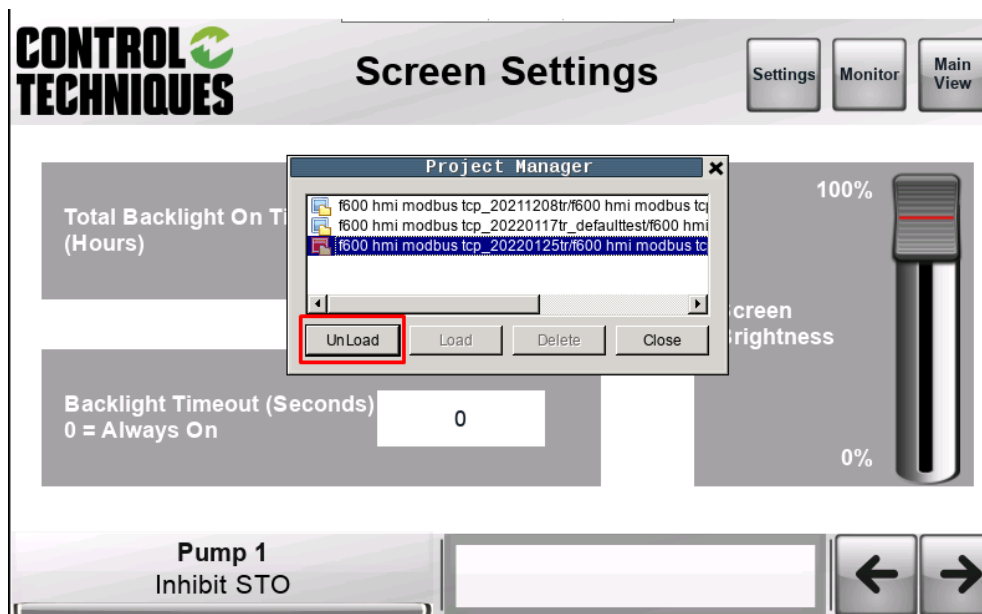
The tab below appears when the finger is pressed on the screen for 5 seconds.



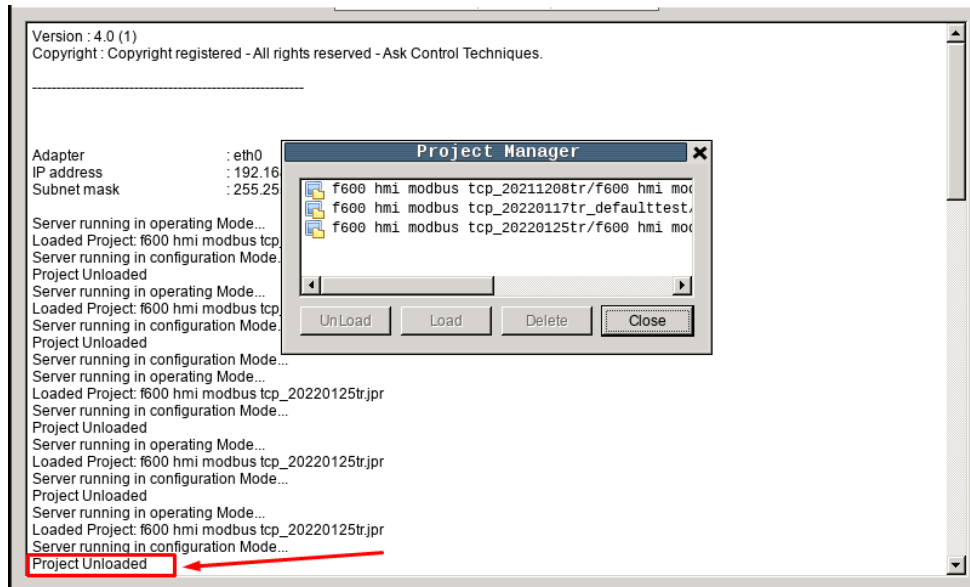
Clicking on “Project Manager” will open the window below, in this window the existing software on the HMI will appear and with the red indication on the left side the software that is loaded on the HMI.



By clicking on “Un Load” as identified below, it is possible to leave the HMI without any software loaded, but they are kept internally in the HMI's memory.



As shown in the image below, it is possible that the software is stored on the HMI, but it is no longer loaded.



If you want to remove the projects loaded on the HMI or if you don't have enough space to download a new project, delete the files as shown in the image below.

