

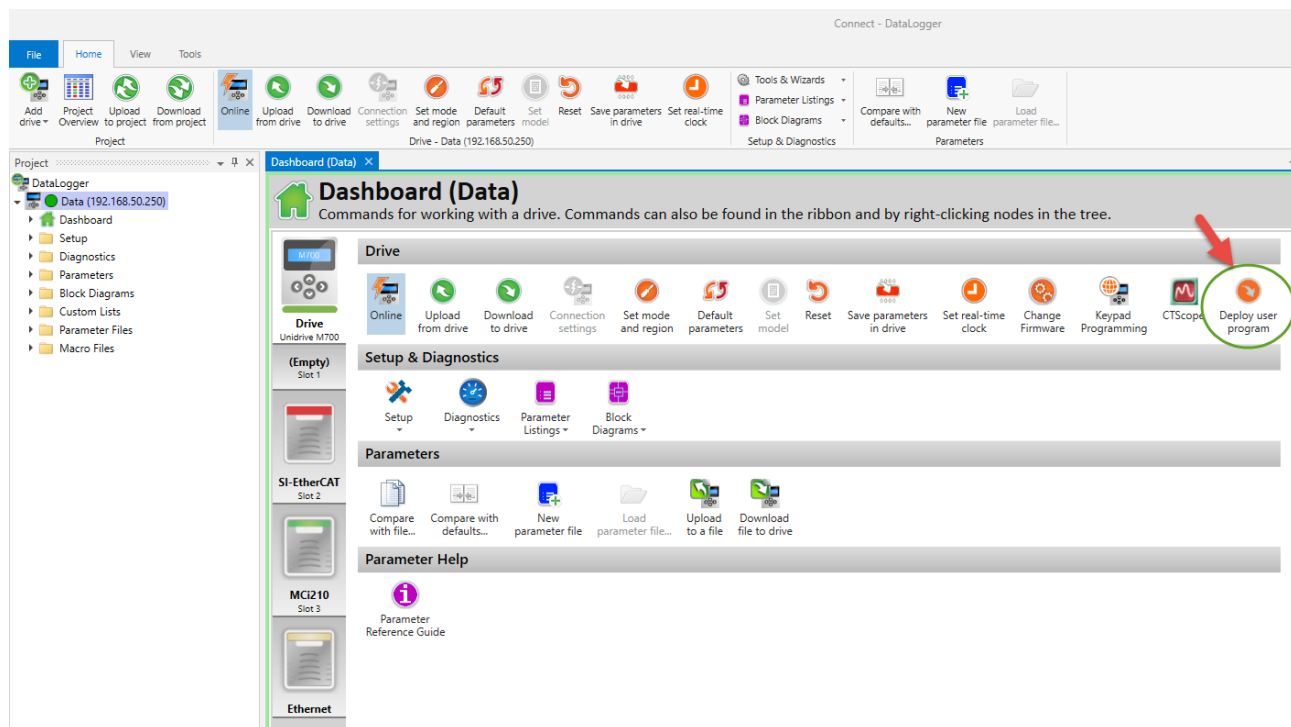
## Downloading Compiled MCS Program

There may be cases where a user needs to download a compiled Machine Control Studio (MCS) program either to the drive onboard memory or to an MCi2x0 module. This may be due to the user not having access to the source code (only supplied the compiled code) or an OEM that wants to download the same program to many drives. To do this the Connect PC software has a feature where the compiled program (APP file in onboard and UBA in MCi2X0) can be downloaded to the target.

To do this the following steps need to be performed:

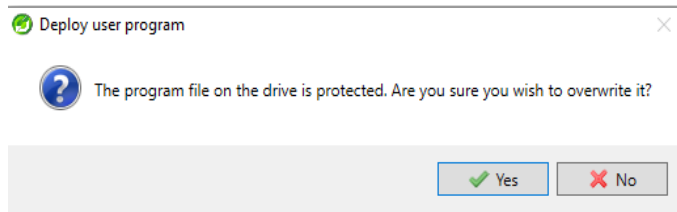
### Onboard Programs

1. Go online with the drive the user wishes to download the compiled MCS program
2. On the drive dashboard click on the Deploy User Program button



3. Navigate to the APP file you wish to download and select Open
4. You will be prompted if you want to overwrite the drive program file as seen below. The onboard program doesn't support source code downloads and only support compiled code downloads. This prompt is to ensure the user is certain they want to do this download as there is no way to recover the overwritten program without the source code.





- Once done deploying to verify the program is running OK navigate to Pr11.047. It should be RUN and Pr11.048 should be 1 indicating the user program is running.

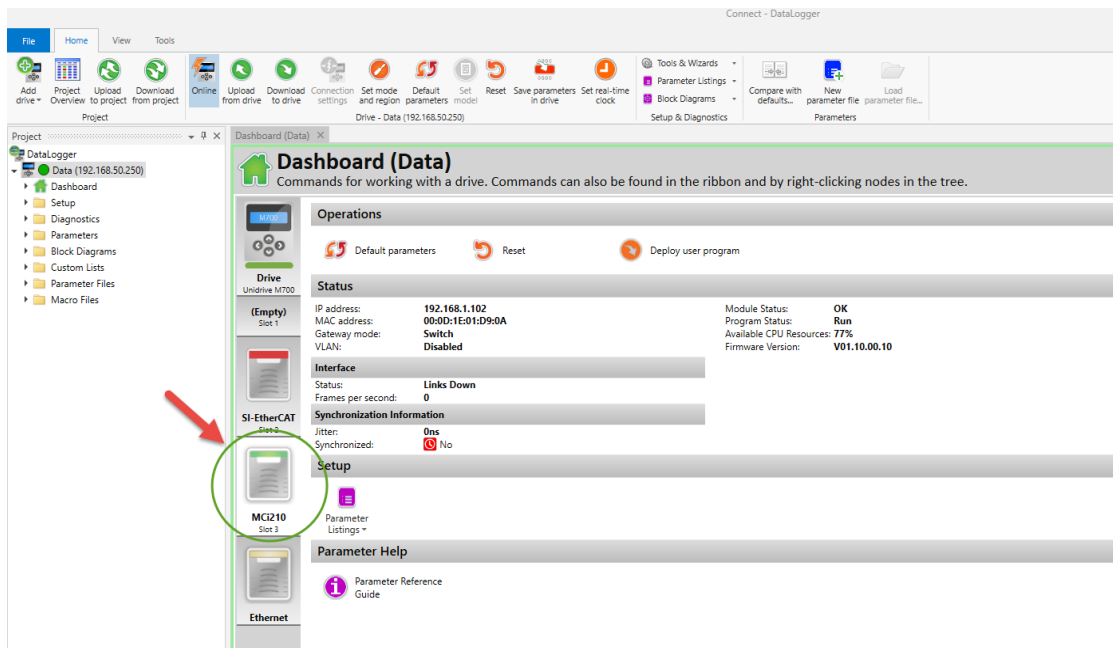
**Menu 11 : Miscellaneous**  
View parameters on the drive and option modules.

Menu caption on keypad: Miscellaneous

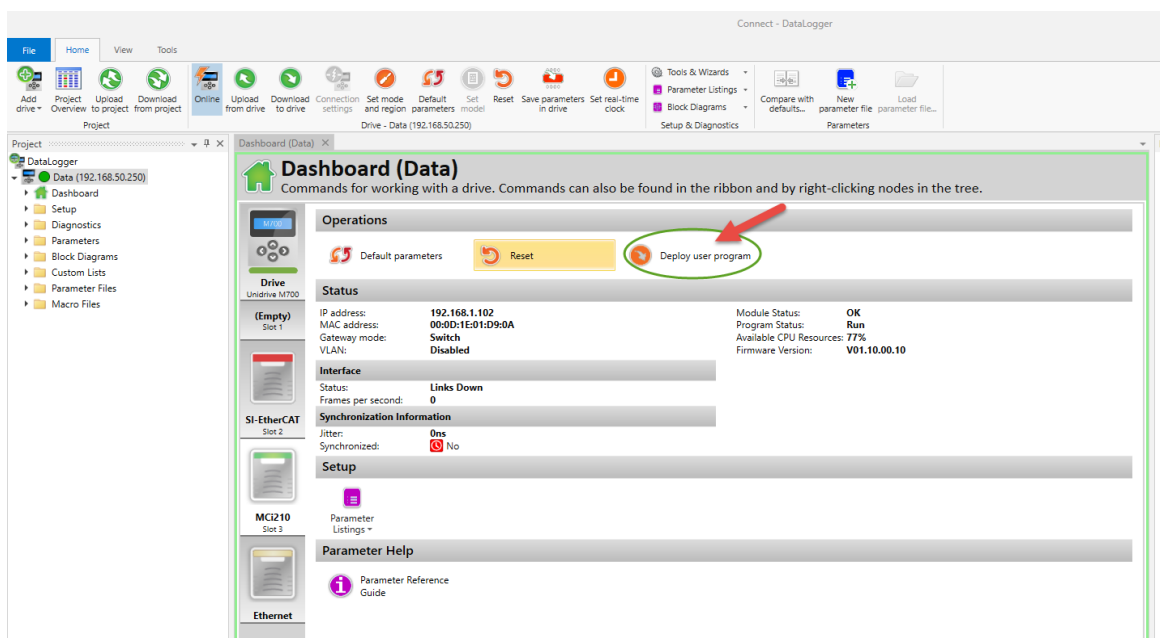
Parameter	Caption on keypad	Categories	Value	Source/Destination
11.000	Parameter mm.000		0	
11.001	Option Synchronisation Select		Slot 2	
11.002	Option synchronisation Active		Not Active	
11.018	Status Mode Parameter 1		0.000	Unassigned
11.019	Status Mode Parameter 2		0.000	Unassigned
11.021	Parameter 00.030 Scaling		1.000	
11.022	Param Displayed At Power-up		0.010	
11.028	Drive Derivative		1	
11.029	Software Version		1210100	
11.030	User Security Code		0	
11.031	User Drive Mode		RFC-S	
11.032	Maximum Heavy Duty Rating		5.000 A	
11.033	Drive Rated Voltage		200V	
11.034	Software Sub-version		1	
11.035	Number Of Power Modules Test		-1	
11.036	NV Card File Previously Loaded		0	
11.037	NV Media Card File Number		0	
11.038	NV Media Card File Type		None	
11.039	NV Media Card File Version		0	
11.040	NV Media Card File Checksum		0	
11.042	Parameter Cloning		None	
11.043	Load Defaults		None	
11.044	User Security Status		All Menus	
11.045	Select Motor 2 Parameters		Motor 1	
11.046	Defaults Prev Loaded		1233	
11.047	OUP Enable		Run	
11.048	OUP Status		1	
11.049	OUP Programming Events		16	
11.050	OUP Freeheeling Tasks PerSecond		780	

### MCI2X0 Programs

- Go online with the drive the user wishes to download the compiled MCS program.
- On the drive dashboard click on the MCI2x0 module. NOTE: Screen shot shown below may vary depending on your drive configuration and modules installed.



3. Click on the Deploy User Program Button



4. Navigate to the UBA you wish to download and select Open.

- Once done deploying the file and the module has finished its reset/initial task you should see the Module status go to OK and Program Status go to Run to indicate the file was deployed correctly and the program is running

The screenshot shows the Control Techniques DataLogger software interface. The main window displays the 'Dashboard (Data)' for a drive connected at 192.168.50.250. The interface includes a ribbon menu at the top with various tools and a left sidebar with a project tree. The main content area is divided into several sections: Operations, Status, Interface, Synchronization Information, Setup, and Parameter Help. A red arrow points to the 'Status' section, which shows the following information:

Status	
Module Status:	OK
Program Status:	Run
Available CPU Resources:	77%
Firmware Version:	V01.10.00.10

The 'Status' section also includes a 'Reset' button and a 'Deploy user program' button. The 'Interface' section shows 'Links Down' and 'Frames per second: 0'. The 'Synchronization Information' section shows 'Jitter: 0ms' and 'Synchronized: No'. The 'Setup' section shows 'Parameter Listings'. The 'Parameter Help' section shows 'Parameter Reference Guide'.