

This Application Note is specific to the Unidrive M60x through M800x

Updating the MCi210 Firmware

Scope – The firmware for the MCi210 fitted to a Unidrive M series is intended to be field-upgradable via a communication link using M-Connect hosted on a PC/Laptop running one of the supported versions of the Microsoft Windows Operating System and a communication link. The Apple Mac OS X and Linux are not supported.

The firmware revision on the host Unidrive M must be (at least) up to a revision of 01.00.00.00 to use this procedure, and a SI-Keypad must be available. See CTAN381 **Unidrive M Firmware Update** for additional guidance on any revisions needed on the host Unidrive M firmware.

This Quick note will illustrate using M-Connect version 01.05.00 to upgrade a MCi210 hosted on a M700 (above revision 01.00.00.00) to a firmware revision of 01.02.00.08 using an Ethernet communication link. A MCi210 fitted to a M701 using the onboard FFM RS-485 option is similar.

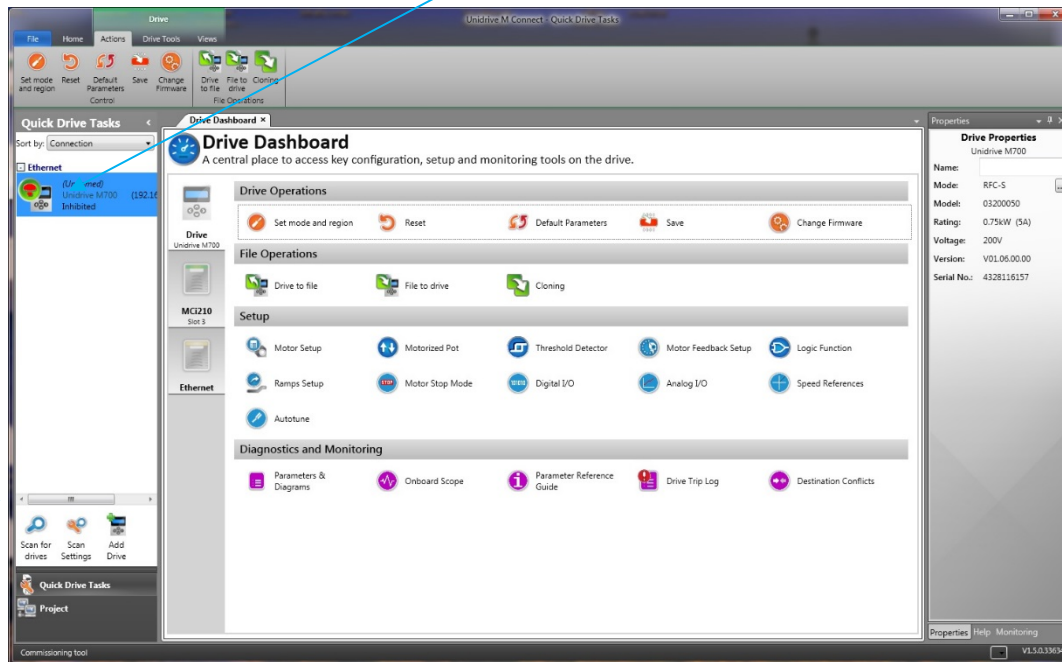
Equipment Required – A PC / Laptop running XP Pro SP3, Vista Business SP1 32-bit or Windows 7 Pro (32-bit or 64-bit) with CT M-Connect installed is recommended. A firmware image for the MCi210 is required.

A functional Ethernet link (or RS-485 link for a M701) between the PC/Laptop and the Unidrive M is also required. Functional, in that it is possible to “ping” the M70x0 (or M702) from the PC/Laptop running M-Connect at the intended ipv4 address.

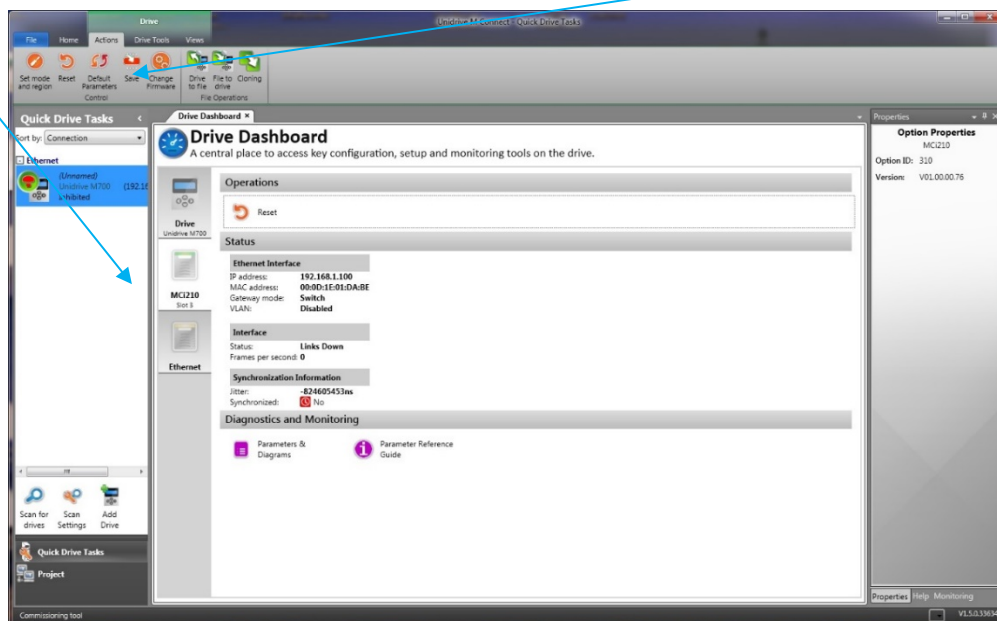
Note that the Unidrive M must be powered to follow this procedure. Also note that this procedure assumes operating the M60x, M70x or M80x to be upgraded (and host the FFM-Ethernet) with full DC Link voltage present. When operated on reduced DC Link voltage (such as with a Unidrive M Demo), one must use the SI-Keypad and enter a value of 1001, followed by a reset to save the changes made.

Step by Step Instructions

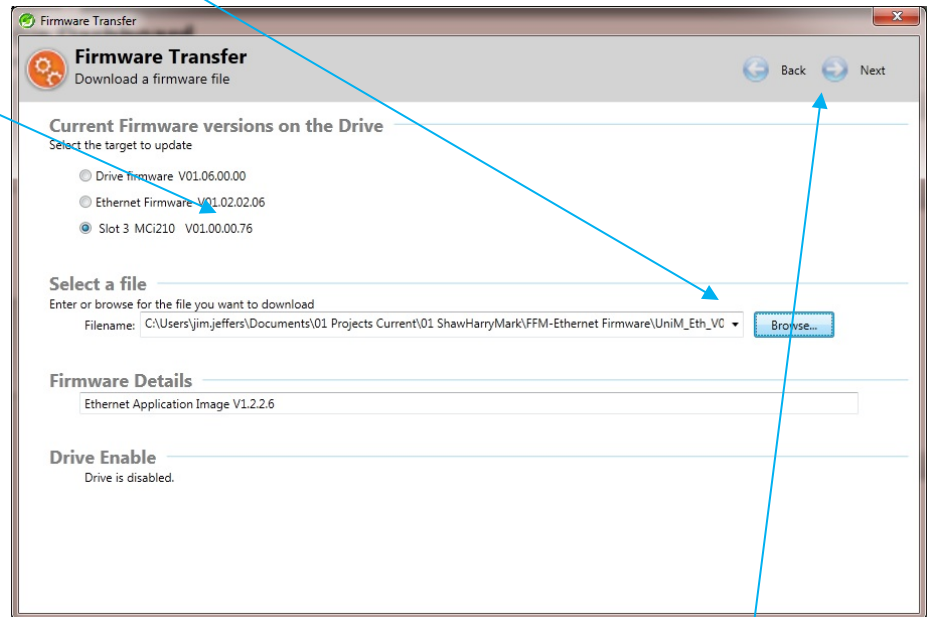
Run M-Connect and Scan for drives. Select your intended target.



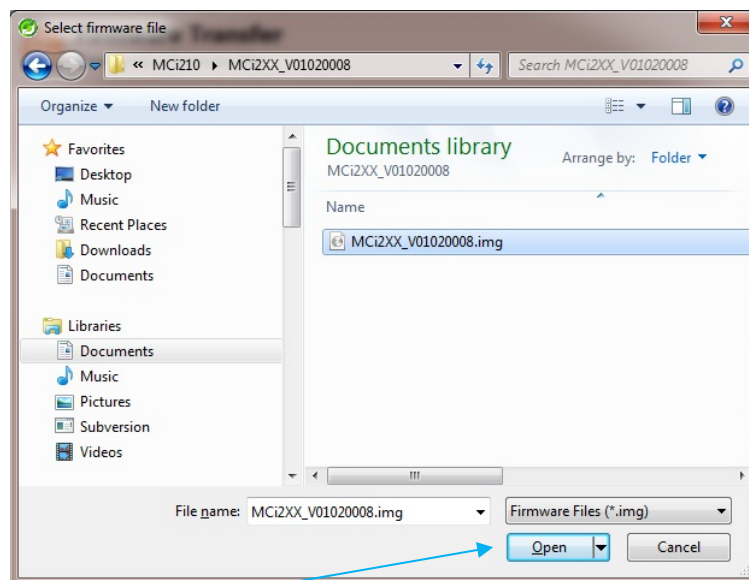
Select the MCi210, and note the Drive Properties. Click on “Change Firmware”.



Select "Slot 3 MCi210 V0x.xx.xx.xx". Click on "Browse..."

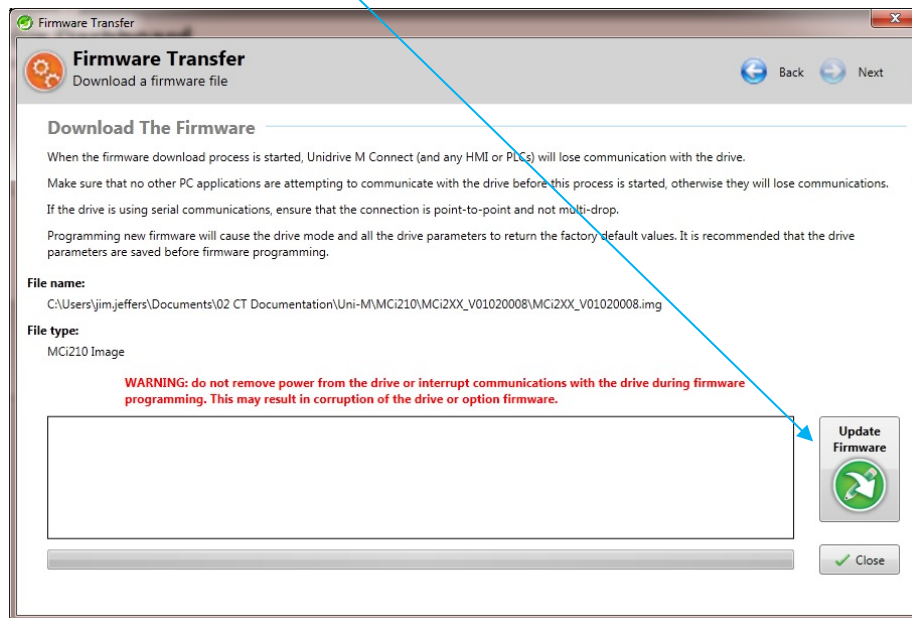


Navigate to the MCi210 firmware image you intend to load into the MCi210.

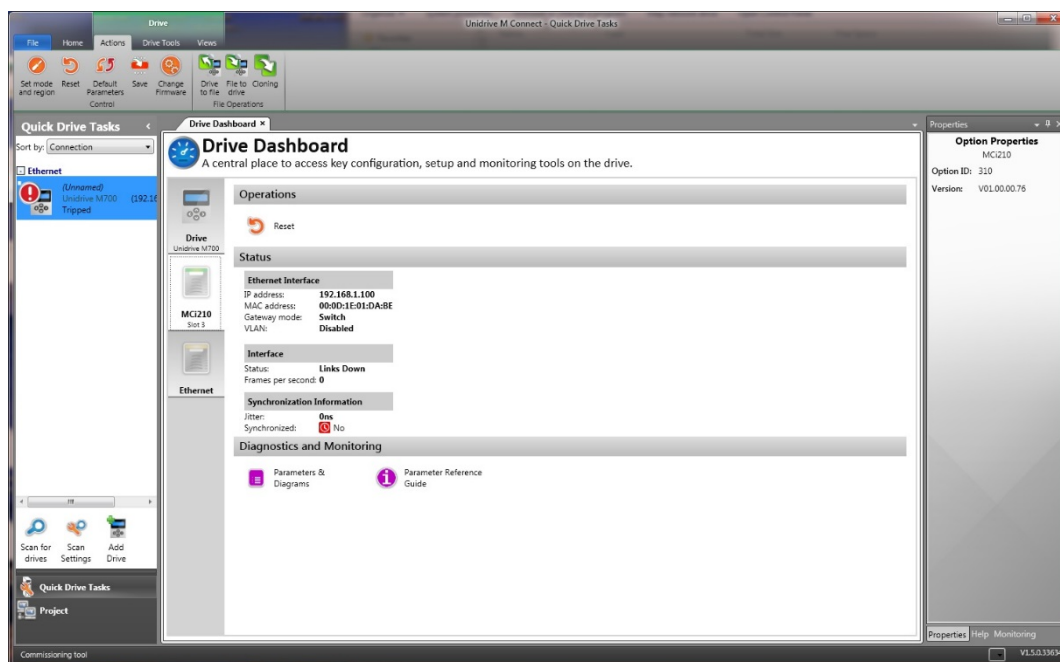


Click on "Open" to select. Then click on Next in the previous image to proceed.

The following window will appear. Left-click the “Update Firmware” button to begin the transfer from the PC/Laptop to the host Unidrive M.



Once the transfer is complete, the host Unidrive M will actually execute the upgrade *and this screen will be displayed*. Note that that a trip is now present and that the firmware revision displayed is still is the original revision.

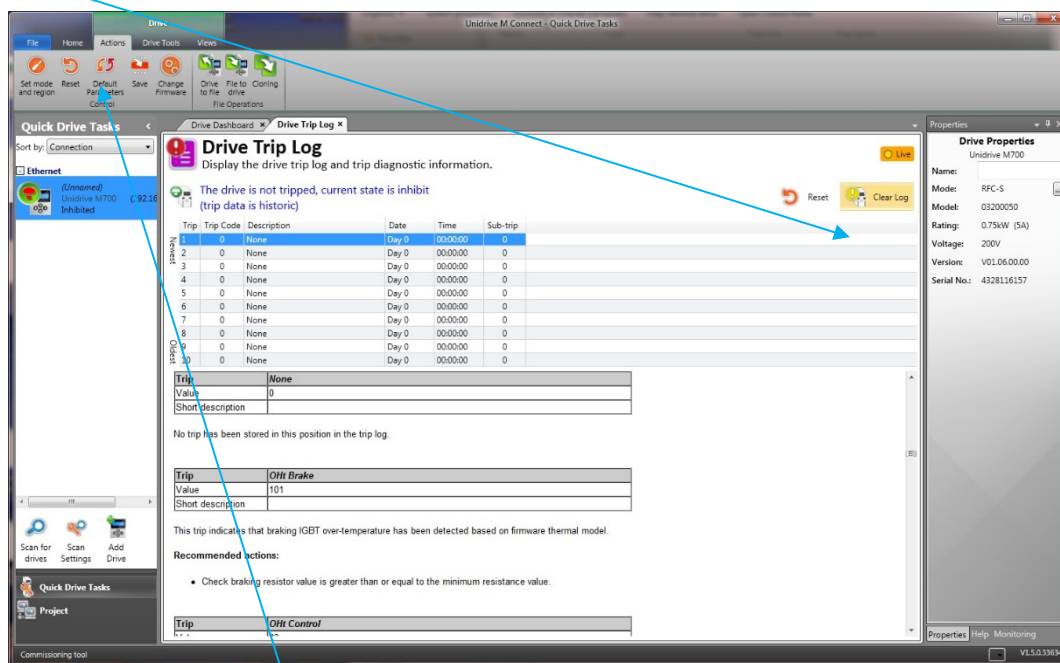


At this point, the initial clean-up is done with the SI-Keypad.

#17.008 to On Default (self-reset when #17.007 self-resets).
#17.007 to On (wait for Off) Reset (self-resets)
#00.000 to 1000 (or 1001) Save value <enter>

Once #17.007 has “self-reset” back to “Off”, the firmware revision observed in #17.002 should reflect what was loaded into the MCi210.

The last step in the clean-up is to clear the trip log. This is performed with M-Connect. Select the Drive Trip Log pane from the Drive Dashboard and click the “Clear Log” button.



Then click the “Save” option in the “Action” Button bar”. This is what this should look like, when complete.

Resources: can be found on our website: www.controltechniques.com
For help contact techsupport.cta@mail.nidec.com, or
call Technical Support at 952-995-8000, 24/7/365