

This Application Note applies to the Quantum MP series drives

Quantum MP Default Files



On occasion it may be necessary to reload a Quantum MP Drive with factory settings. Reasons for reloading to factory settings:

- 1) If one were dabbling with parameters and seemed to get them all messed up
- 2) Drive moved from one motor application to another
- 3) Swapping the Main Control board from one drive to another
- 4) Drive tripping on **EEF** (parameter memory error) fault may require a flushing by defaulting drive then resetting with Quantum MP factory settings.

One could reload Quantum MP Factory settings in three different ways.

- 1) **Manually** – by entering the 18 differences from default (below) using the Keypad

Parameters:

#05.16 = On	DC Contactor being used
#06.40 = On	Enable Sequencer Latching
#07.15 = Volt	Analog 3 Input Configuration
#08.22 = 0	T25 Destination
#08.23 = 0	T26 Destination
#08.24 = 0	T27 Destination
#08.26 = 0	T29 Destination
#09.04 = 17.06	External Trip Logic Function 1 Source 1
#09.05 = On	Inverter Logic Block 1 Configured
#09.09 = 0.1	External Trip Delay (in Seconds)
#09.10 = 10.32	Logic Function 1 Destination
#09.37 = 1	AND Gate Logic Block 1 Configuration
#17.21 = 6.39	Stop Not T1 Input
#17.22 = 6.34	Run T2 Input



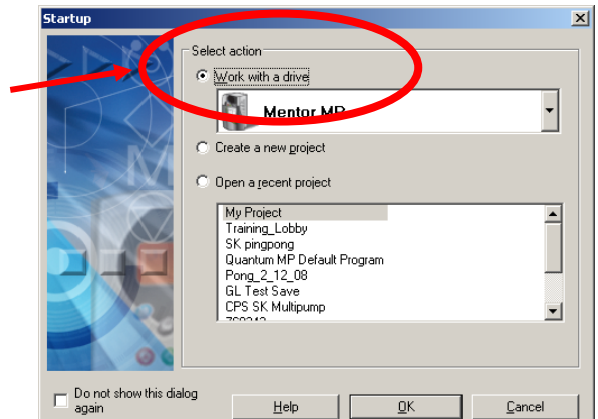
All for dreams

- #17.23 = 6.31
- #17.24 = 6.33
- #17.25 = 10.33
- #17.28 = 6.55

- Jog T3 Input
- Forward / Reverse T4 Input
- Drive Reset T5 Input
- Contactor Enable Relay 2 Source

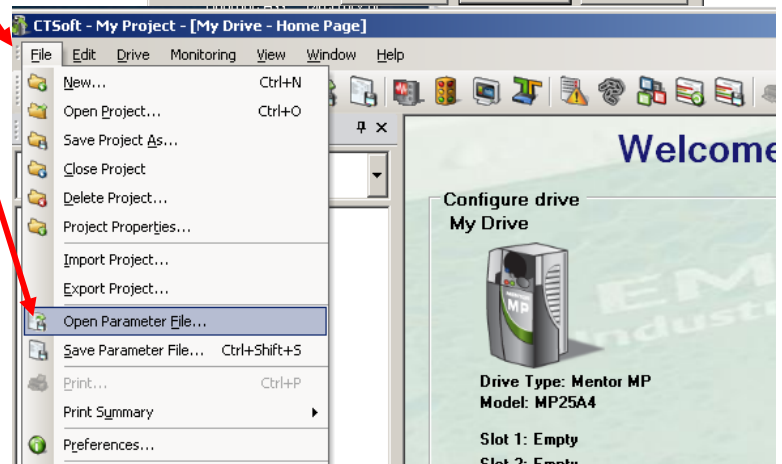
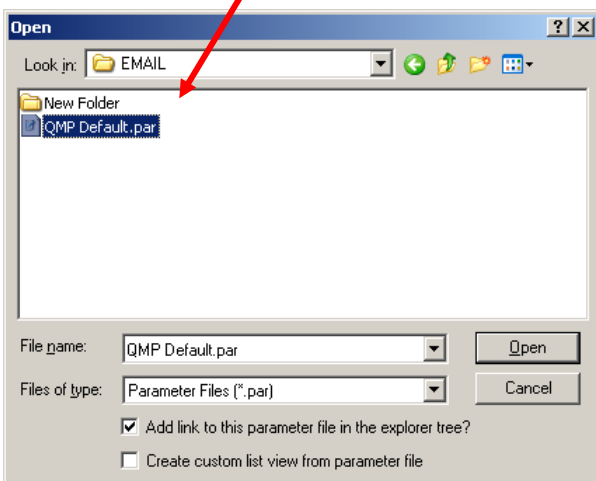
- 2) **SMARTCARD** – With the SMARTCARD that was shipped with the Quantum MP inserted, Set Parameter XX.00 to 6200 and then do a reset. After programming the drive with the defaults, **Save** the parameters to the drive.
- 3) **Using CTSOFT** – All Quantum MP’s have a built-in serial communication port that can be connected to a laptop using a customized cable with part number **CT- USB-Cable** or **CT-Comms-Cable**. Quantum MP factory files can be downloaded into the drive using CTSOFT software. (*Issue 1.13.00 of CTSOFT or later should be used with the Quantum MP)

After downloading the Quantum MP Factory Default File to a known location and opening CTSOFT, select “Work with a drive” and choose the Mentor MP.

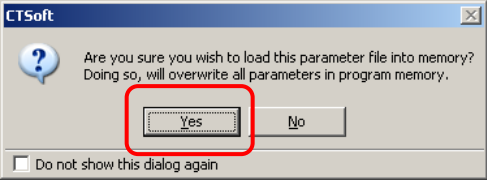
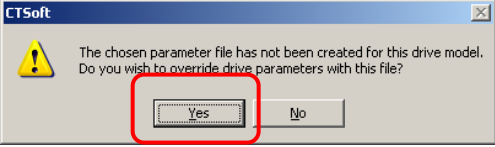
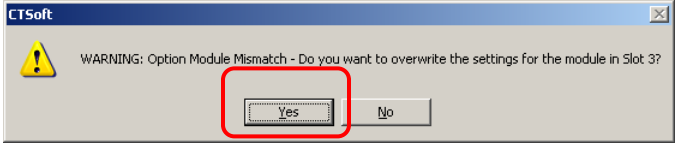
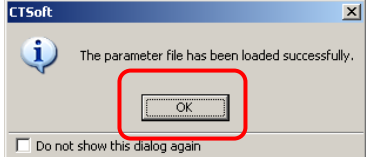


Under **File** select **Open Parameter File...**

Select the **QMP Default.par** and **Open**

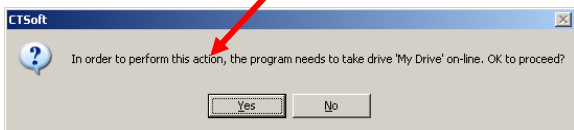


After opening the Quantum MP Default file, a few pop up messages will appear.

- 1) 
- 2) 
- 3) 
- 4) 

When the normal startup screen appears select the option in the Toolbox **“Download Parameters”**

To download the program you will need to go on line... Select **Yes**



Finally, Select... **Save Parameters in Drive** parameter to the drive.

Resources: can be found on our website: www.controltechniques.com

For help contact techsupport.cta@mail.nidec.com, or call Technical Support at 952-995-8000, 24/7/365