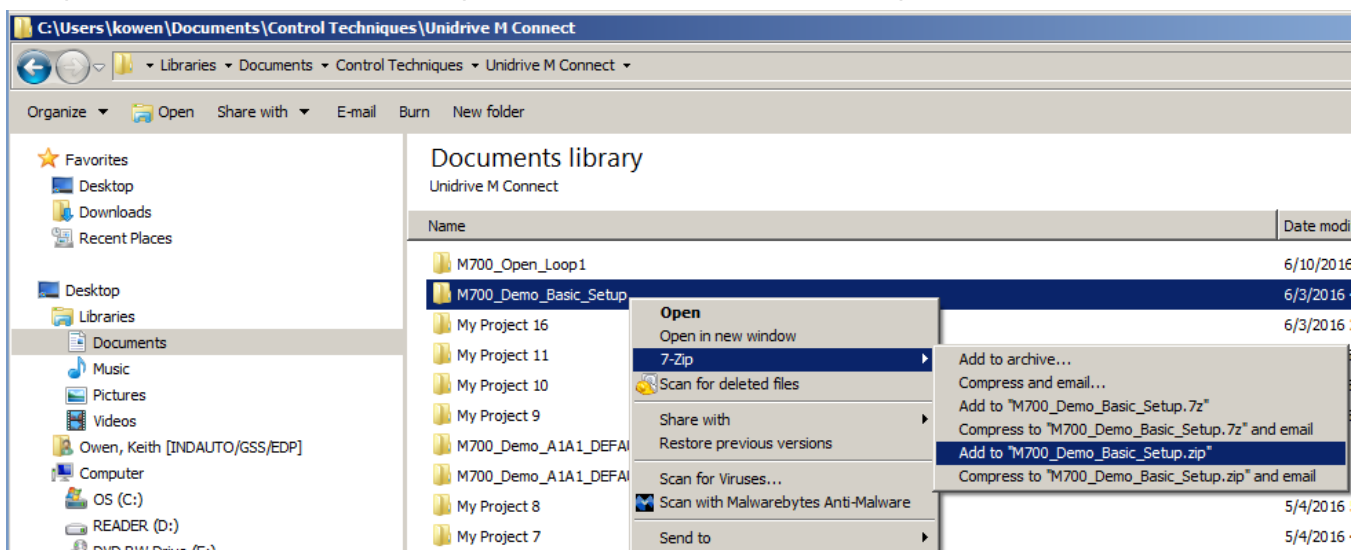


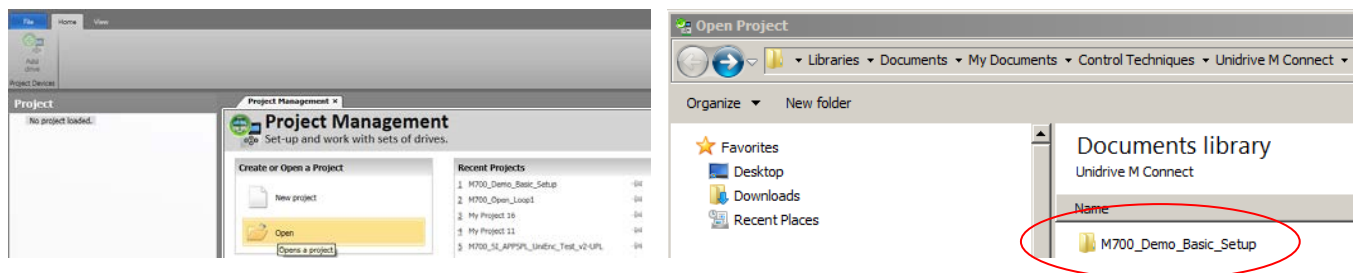
This Application Note applies to the Unidrive M Connect, HVAC Drive Connect, Powerdrive F300 Connect and Elevator Connect Software packages

## Preferred method for emailing a Connect software project

This application note will show the preferred method to email a Connect software project. Below is a snip for the default folder location for Unidrive M Connect project files. C:\Users\<your username>\Documents\Control Techniques\Unidrive M Connect. Each folder represents one Unidrive M Connect project including all required supporting files. The preferred method is to use some sort of compression software such as 7-Zip and add the entire folder to a .zip folder which can be emailed.



Once the .zip folder has been emailed the recipient can extract the entire folder contents to the default folder location or to a user created project folder. Open Unidrive M Connect software and select File 'Open'. The project that was extracted now shows up in the folder list and can be opened and will include all of the project information including setup information for any SI-Modules if fitted into the drive slots.



**Resources:** can be found on our website: [www.controltechniques.com](http://www.controltechniques.com)

For help contact techsupport.cta@mail.nidec.com, or  
call Technical Support at 952-995-8000, 24/7/365