

This Application Note applies to M Connect Software

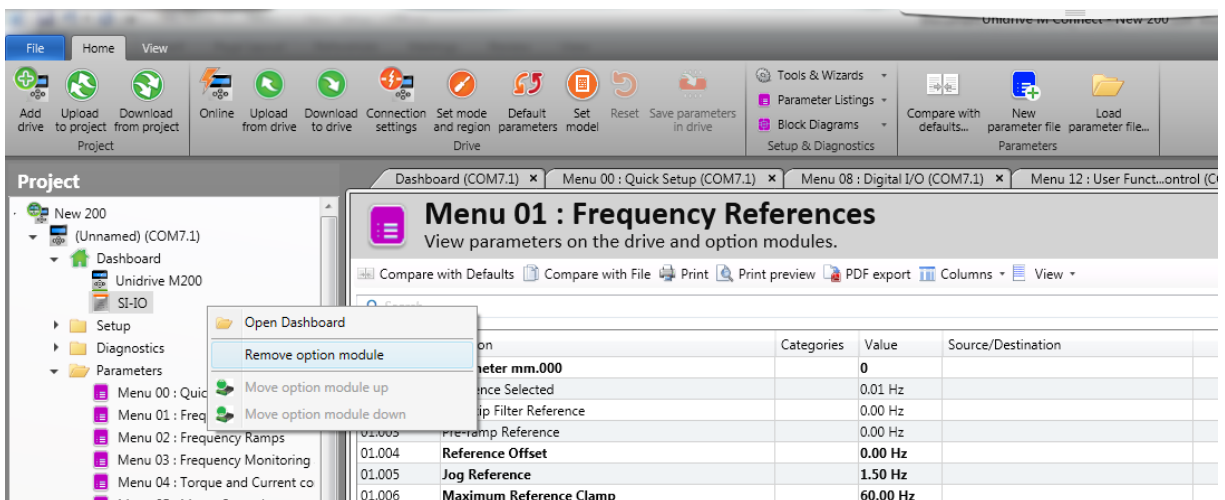
Removing a Module from M Connect

Working with the Software

There are occasions where setting up the drive the wrong parameter(s) was accessed leading to inoperative condition from the drive or swapping a drive from another location may require a different setup.

Expand the tree selection under **Project** to reveal the Dashboard and then expand that tree selection. You will find your Unidrive model along with the module used.

Right-click on the module of the list then select “**Remove option module**”. The module will be eliminated.



Resources: can be found on our website: www.controltechniques.com

For help contact techsupport.cta@mail.nidec.com, or
call Technical Support at 952-995-8000, 24/7/365